

## **July 18, 2024 Steering Committee Meeting Analysis**

*July 18th Attendance: 10 Members*

The July 18th Steering Committee meeting started with an opportunity for discussion and comment on the drafted Long Lake Township subplan, and for additional input regarding the strategies and to find preferences for aspects of design, landscape and sign standards.

Outside of clarifications, grammatical and spelling revisions, discussion themes included protection of Long Lake Township natural environment protection from commercial activity, desire for more citizen engagement and participation such as meetings with interested residents and notifying all residents of impactful developments, and the potential for requiring sidewalks for new subdivisions and developments.

Following the discussion, members went through a gallery walk and response sheet and marked what they supported in each of the Activity Centers. The gallery walk responses were all marked the same for nearly every picture across the Activity Centers (those that differ are noted below). These responses help give some direction to the general preferences that the community holds, specifically looking at commercial and residential building types, buffer types, and signage types.

In respects to buffer types, responses showed support for elements such as coniferous tree lines (5 supported), existing vegetation (3), shrubs, deciduous tree lines, and landscaped berms (all supported by 2 each). For residential building material types, wood/log was supported by 4 members while stone material was supported once. Commercial building material types that are preferred were brick (5), wood/log (4 - Hamlet, 3 - North and West), and siding with windows (4 - North, 3 - West and Hamlet). There was also support for the brick and glass option (1).

The last gallery walk set was in regard to signage types which showed preference for wood (7), standalone A-frame (7 - Hamlet and North, 6 - West), hanging (6), and brick (4). Comments on the signage mentioned no neon lighting or large pole signs. For the maximum size of the sign, the preferred size was four feet by four feet, or not to exceed 16 square feet (3), with not to exceed 24 square feet (1) also having support.

The last sheet revisited support for the strategies and strategy theme prioritization. For the top priority of the Activity Centers, Zoning, Design, and Landscape standards and Ordinance Development and Enforcement (4 each) led Traffic Calming (2). Last asked for any comments related to the Activity Centers for the Planning Commission, with the comments being. "To preserve the natural environment, there should be no commercial sales of anything on Long Lake waters including beaches, boats, docks." and "For anything being done, preserve as many trees as possible." Support and any comments for the strategies can be seen below. Please see Appendix XX for full results.

Strategies Revisit	Support
North Activity Center Overlay with design standards, architectural standards, landscaping	<ul style="list-style-type: none"> <li>- 3 for support</li> <li>- Comment: No - North Activity Center</li> </ul>
West Activity Center Overlay with design standards, architectural standards, landscaping	<ul style="list-style-type: none"> <li>- 4 for support</li> </ul>
Update the Hamlet Center Development Option to include design standards, architectural standards, landscaping	<ul style="list-style-type: none"> <li>- 6 for support</li> </ul>
Lower speed limits on Long Lake Road through the Activity Centers	<ul style="list-style-type: none"> <li>- 5 for support</li> <li>- Comment: Will need MSP cooperation</li> </ul>
Install Pedestrian Activated Crosswalks at: <ul style="list-style-type: none"> <li>- <i>Long Lake Grocery to Taylor Park</i></li> <li>- <i>Fresh Coast to Moomers</i></li> </ul>	<ul style="list-style-type: none"> <li>- 7 in support</li> </ul>
Install Roundabouts at: <ul style="list-style-type: none"> <li>- <i>N Long Lake Rd and Strait Rd (progress)</i></li> <li>- <i>N Long Lake Rd and E Long Lake Rd</i></li> <li>- <i>N Long Lake Rd and W Long Lake Rd</i></li> </ul>	<ul style="list-style-type: none"> <li>- 4</li> <li>- 2</li> <li>- 1</li> </ul>
Build an outdoor plaza for public gatherings in the North Activity Center	<ul style="list-style-type: none"> <li>- Comment: No! Our Township Hall is a gathering place.</li> </ul>
Connect Gilbert Park and Taylor Park with walking/biking path	
Connect Twin Lakes Park, businesses, and old elementary school in North Activity Center with walking/biking path	<ul style="list-style-type: none"> <li>- Comment: Absolutely not - logging and roads around twin lakes park will ruin this majestic park.</li> <li>- Comment: No, but consider altering the entrance. The current one is dangerous due to line of sight.</li> </ul>
Adjust zoning to allow for increased duplexes in the North Activity Center	<ul style="list-style-type: none"> <li>- 4 for support</li> </ul>
Develop and enforce Township Ordinances to protect environmental features	<ul style="list-style-type: none"> <li>- 6 for support</li> <li>- Comment: No commercial sales on Long Lake including boats, waters, beaches, or docks</li> </ul>
Other:	





BUFFER TYPE EXAMPLES

BUFFER TYPE EXAMPLES

OULD THE TOP  
ME BE FOR THE  
TERS? PLEASE


Traffic Calming  
Traffic Development  
Traffic Calming



HAMLET	NORTH	WEST
Green dot, Red dot	Green dot	Green dot, Red dot




HAMLET	NORTH	WEST
Orange dot	Orange dot	Orange dot




HAMLET	NORTH	WEST




HAMLET	NORTH	WEST
Orange dot, Green dot, Red dot	Orange dot, Green dot, Red dot	Orange dot, Green dot, Red dot



HAMLET	NORTH	WEST



HAMLET	NORTH	WEST
Green dot, Red dot	Green dot, Red dot	Orange dot, Red dot



HAMLET	NORTH	WEST
Orange dot, Red dot, Red dot	Orange dot, Red dot, Red dot	Orange dot, Red dot, Red dot





BUILDING TYPES

HAMLET	NORTH	WEST

HAMLET	NORTH	WEST

NORTH	WEST
●	

WEST
●

BUILDING TYPES EXAMPLES



HAMLET	NORTH	WEST
● ● ● ●	● ● ● ●	● ● ● ●



HAMLET	NORTH	WEST

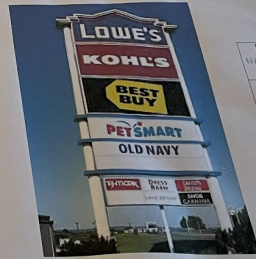
SIGNAGE EXAMPLES



HAMLET	NORTH	WEST



HAMLET	NORTH	WEST
● ● ● ●	● ● ● ●	● ● ● ●



HAMLET	NORTH	WEST
NO NO	NO NO	NO NO