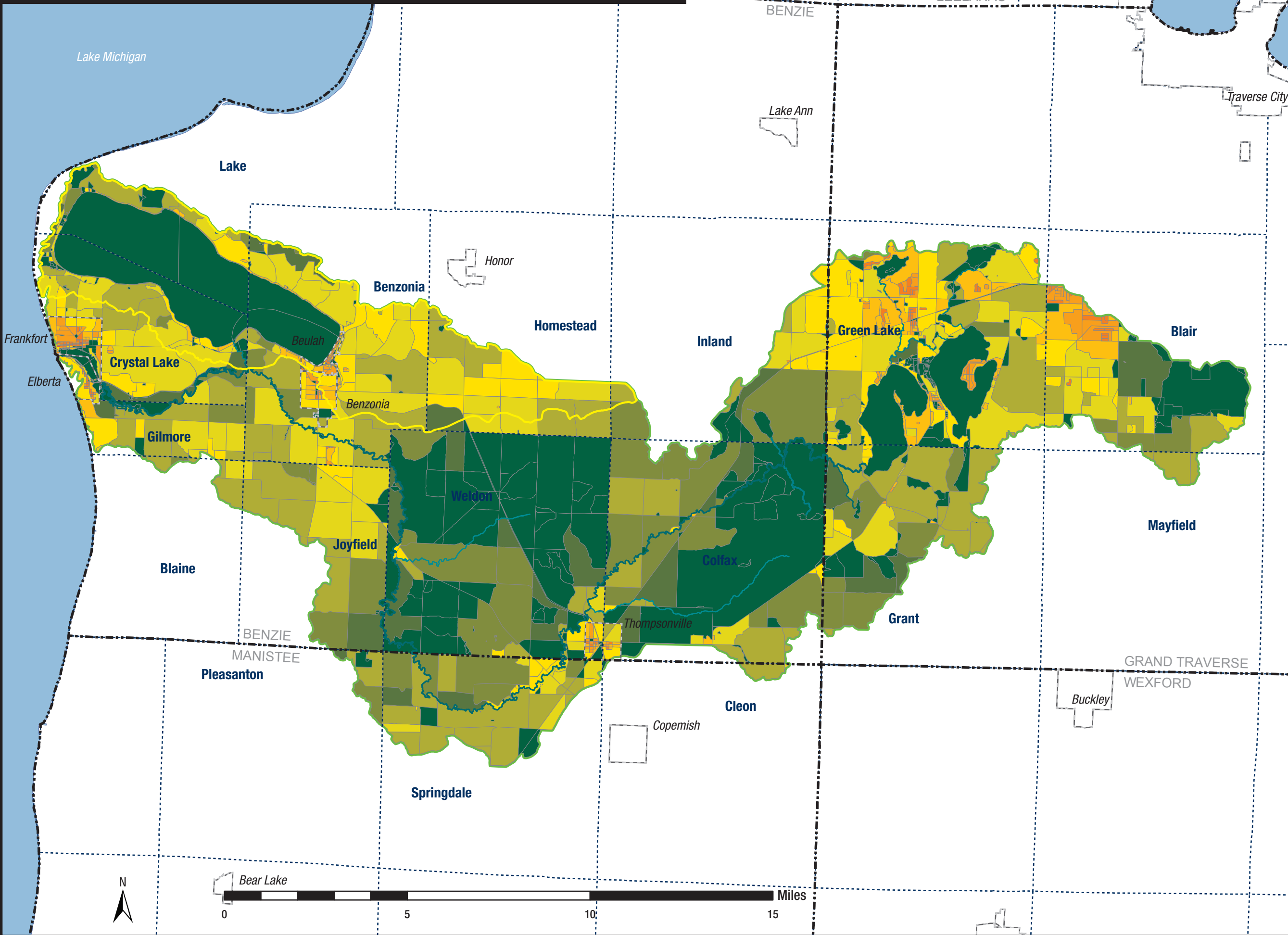
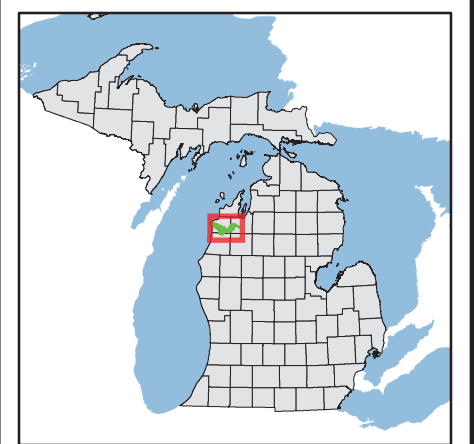


**BETSIE RIVER / CRYSTAL LAKE WATERSHED** | POPULATION DENSITY BY CENSUS BLOCK MAP



**LEGEND**

**LOCATOR MAP**



**KEY | POPULATION DENSITY (GEOMETRIC)**

Color	Population Density Range	People per Acre
Dark Green	0.000 - 0.005	0.000 - 0.005
Medium Green	0.005 - 0.015	0.005 - 0.015
Light Green	0.015 - 0.035	0.015 - 0.035
Yellow-Green	0.035 - 0.085	0.035 - 0.085
Yellow	0.085 - 0.200	0.085 - 0.200
Light Yellow	0.200 - 0.500	0.200 - 0.500
Orange	0.500 - 1.500	0.500 - 1.500
Dark Orange	1.500 - 3.000	1.500 - 3.000
Red-Orange	3.000 - 10.00	3.000 - 10.00
Red	10.00 - 20.00	10.00 - 20.00

- CITY OR VILLAGE
- TOWNSHIP
- COUNTY

**FEATURES**

- Betsie River Watershed
- Crystal Lake Watershed
- Lake Michigan
- Lakes and Water Bodies
- Rivers
- Major Tributaries
- MDOT Roads
- Local Roads
- Wetlands
- Dam Location
- Major Watershed Lake

Source | 2010 Census

Scale | 1:160,000      Date | 2/18/2016

