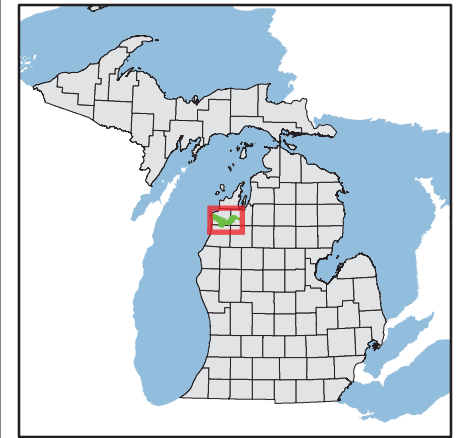


BETSIIE RIVER / CRYSTAL LAKE WATERSHED ROAD STREAM CROSSING INVENTORY MAP

LEGEND

LOCATOR MAP



KEY | SEVERITY OF STREAM IMPACT

- Restored
- Minor
- ▼ Moderate
- Severe
- Minor (WMP Recommended Restoration)
- ▼ Moderate (WMP Recommended Restoration)
- Severe (WMP Recommended Restoration)

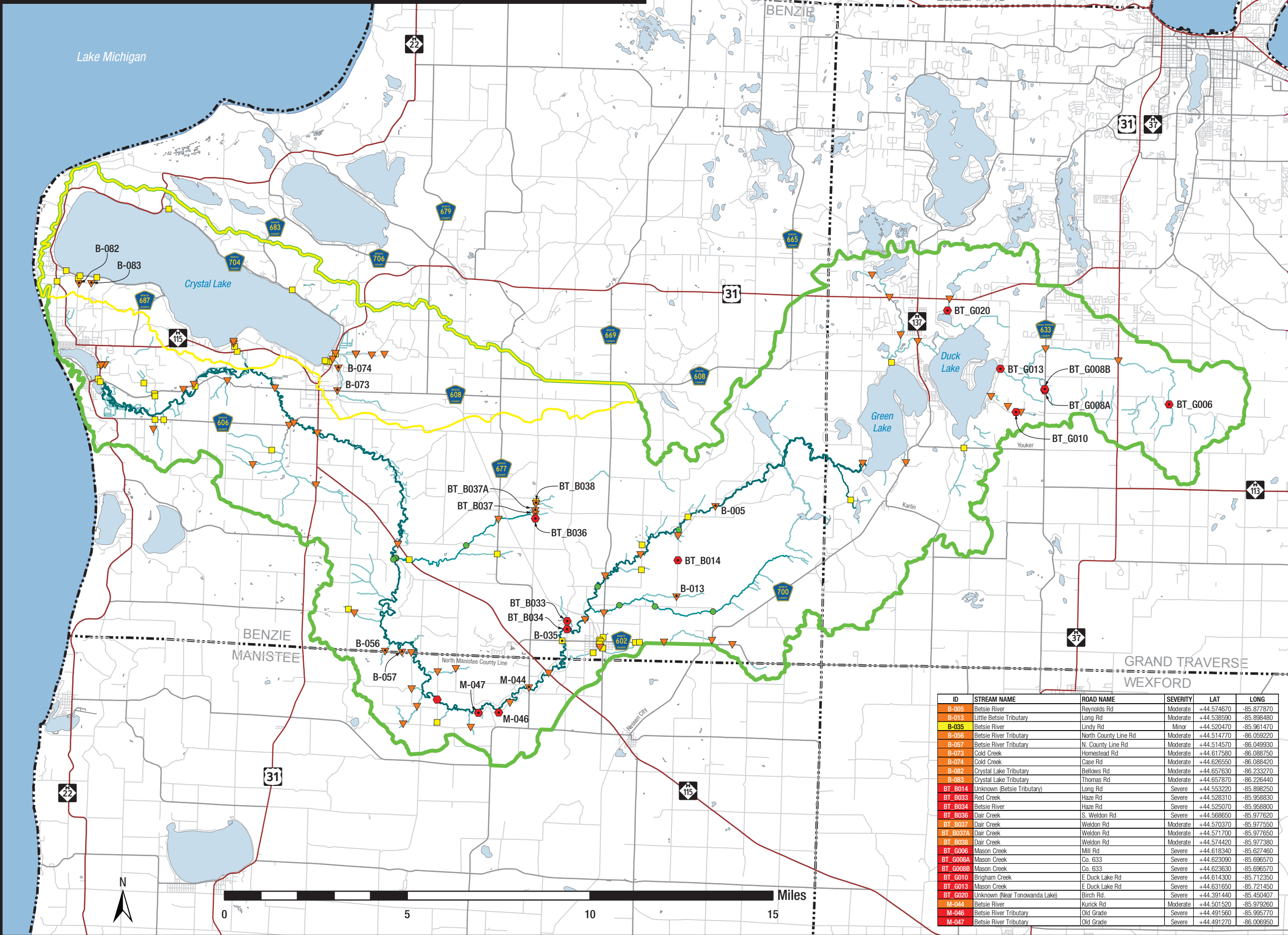
Note: Sites recommended for restoration during the 10-year period of the Betsie River / Crystal Lake Watershed Management Plan are listed in the table and indented by the ID number on the map.

FEATURES

- ▭ Betsie River Watershed
- ▭ Crystal Lake Watershed
- Lake Michigan
- Lakes and Water Bodies
- Rivers
- Major Tributaries
- MDOT Roads
- Local Roads
- Wetlands
- Dam Location
- ▭ Major Watershed Lake

Source | Conservation Resource Alliance

Scale | 1:160,000 Date | 1/8/2016



ID	STREAM NAME	ROAD NAME	SEVERITY	LAT	LONG
B-005	Betsie River	Reynolds Rd	Moderate	+44.574670	-85.877870
B-013	Little Betsie Tributary	Long Rd	Moderate	+44.538590	-85.898480
B-035	Betsie River	Lindy Rd	Minor	+44.520470	-85.961470
B-056	Betsie River Tributary	North County Line Rd	Moderate	+44.514770	-86.059220
B-057	Betsie River Tributary	N. County Line Rd	Moderate	+44.514570	-86.049930
B-073	Cold Creek	Homestead Rd	Moderate	+44.617580	-86.088750
B-074	Cold Creek	Case Rd	Moderate	+44.626550	-86.088420
B-082	Crystal Lake Tributary	Bellows Rd	Moderate	+44.657630	-86.233270
B-083	Crystal Lake Tributary	Thomas Rd	Moderate	+44.657870	-86.226440
BT_B014	Unknown (Betsie Tributary)	Long Rd	Severe	+44.553220	-85.898250
BT_B033	Red Creek	Haze Rd	Severe	+44.528310	-85.958830
BT_B034	Betsie River	Haze Rd	Severe	+44.525070	-85.958800
BT_B036	Dair Creek	S. Weldon Rd	Severe	+44.568650	-85.977620
BT_B037	Dair Creek	Weldon Rd	Moderate	+44.570370	-85.977550
BT_B037A	Dair Creek	Weldon Rd	Moderate	+44.571700	-85.977650
BT_B038	Dair Creek	Weldon Rd	Moderate	+44.574420	-85.977380
BT_G006	Mason Creek	Mill Rd	Severe	+44.618340	-85.627460
BT_G008A	Mason Creek	Co. 633	Severe	+44.623090	-85.696570
BT_G008B	Mason Creek	Co. 633	Severe	+44.623630	-85.696570
BT_G010	Brigham Creek	E Duck Lake Rd	Severe	+44.614300	-85.712350
BT_G013	Mason Creek	E Duck Lake Rd	Severe	+44.631650	-85.721450
BT_G020	Unknown (Near Tonowanda Lake)	Birch Rd	Severe	+44.391440	-85.450407
M-044	Betsie River	Kurick Rd	Moderate	+44.501520	-85.979260
M-046	Betsie River Tributary	Old Grade	Severe	+44.491560	-85.995770
M-047	Betsie River Tributary	Old Grade	Severe	+44.491270	-86.006950

